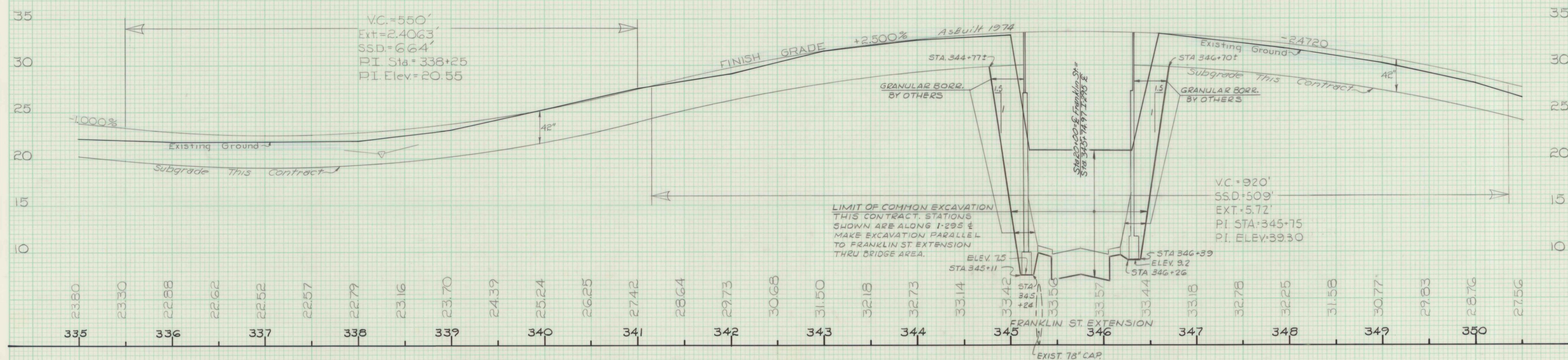
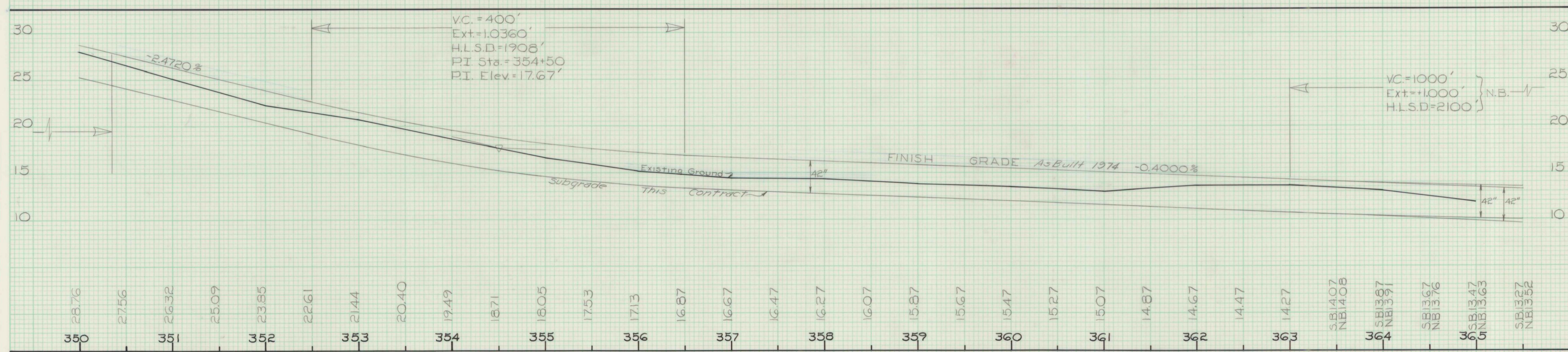


FINAL SURVEY	BY		DATE
NOTE BOOK	SURVEYED		
	PLOTTED		
	TEMPLATE		
	AREAS		
NO.	AREAS CHECKED		



ORIGINAL SURVEY	SURVEYED	BY	DATE
NOTE BOOK	PLOTTED		
	TEMPLATE		
NO.	AREAS CHECKED		



STATE OF MAINE
DEPARTMENT OF TRANSPORTATION

PROFILE
I-295
Sta. 335+0 To Sta. 365+0

As Built 1974

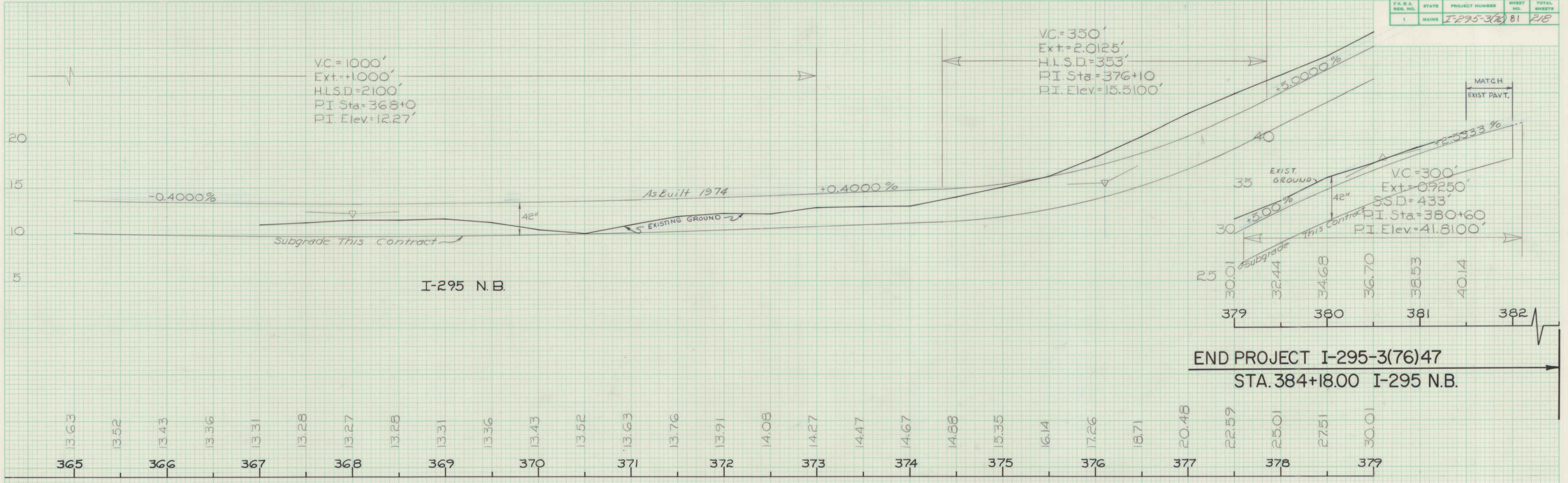
EW 5-17-76

Portland I-295-3(76)

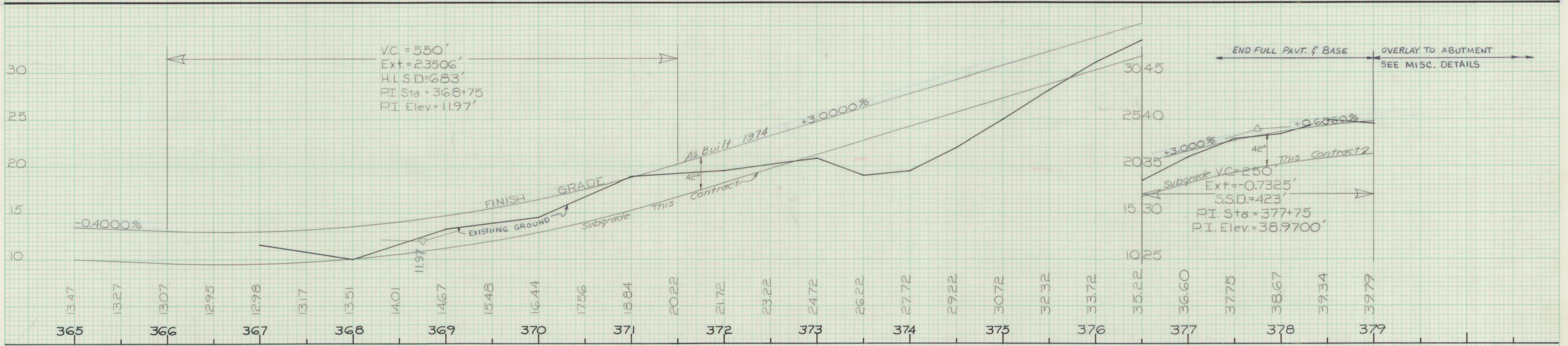
FF9

F.H.W.A. REG. NO.	STATE	PROJECT NUMBER	SHEET NO.	TOTAL SHEETS
1	MAINE	I-295-3(76)	81	218

FINAL SURVEY	SURVEYED PLOTTED	DATE
NO. BOOK	TEMP. PLATE	
AREAS CHECKED		



ORIGINAL SURVEY	SURVEYED PLOTTED	DATE
NO. BOOK	TEMP. PLATE	
AREAS CHECKED		



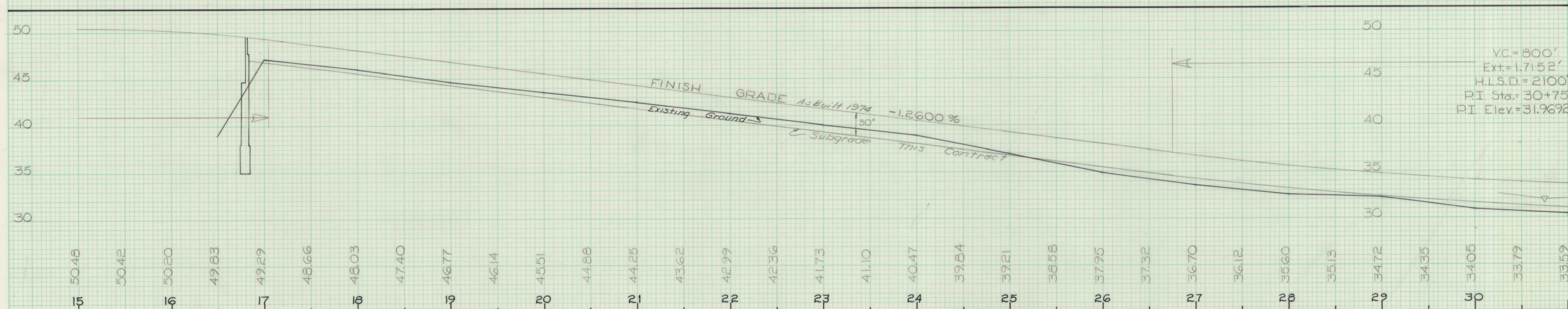
STATE OF MAINE
DEPARTMENT OF TRANSPORTATION

PROFILE
I-295
N.B. Sta. 365+0 To Sta. 382+10
S.B. Sta. 365+0 To Sta. 379+0

As Built 1974
ENR 5-17-76

Portland I-295-3(76)

ORIGINAL SURVEY	BY	DATE
SURVEYED		
PLOTTED		
TEMPLATE		
AREAS		
AREAS CHECKED		



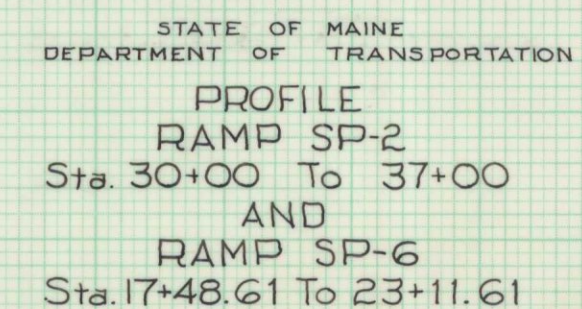
ENP 5-17-76

STATE OF MAINE
DEPARTMENT OF TRANSPORTATION

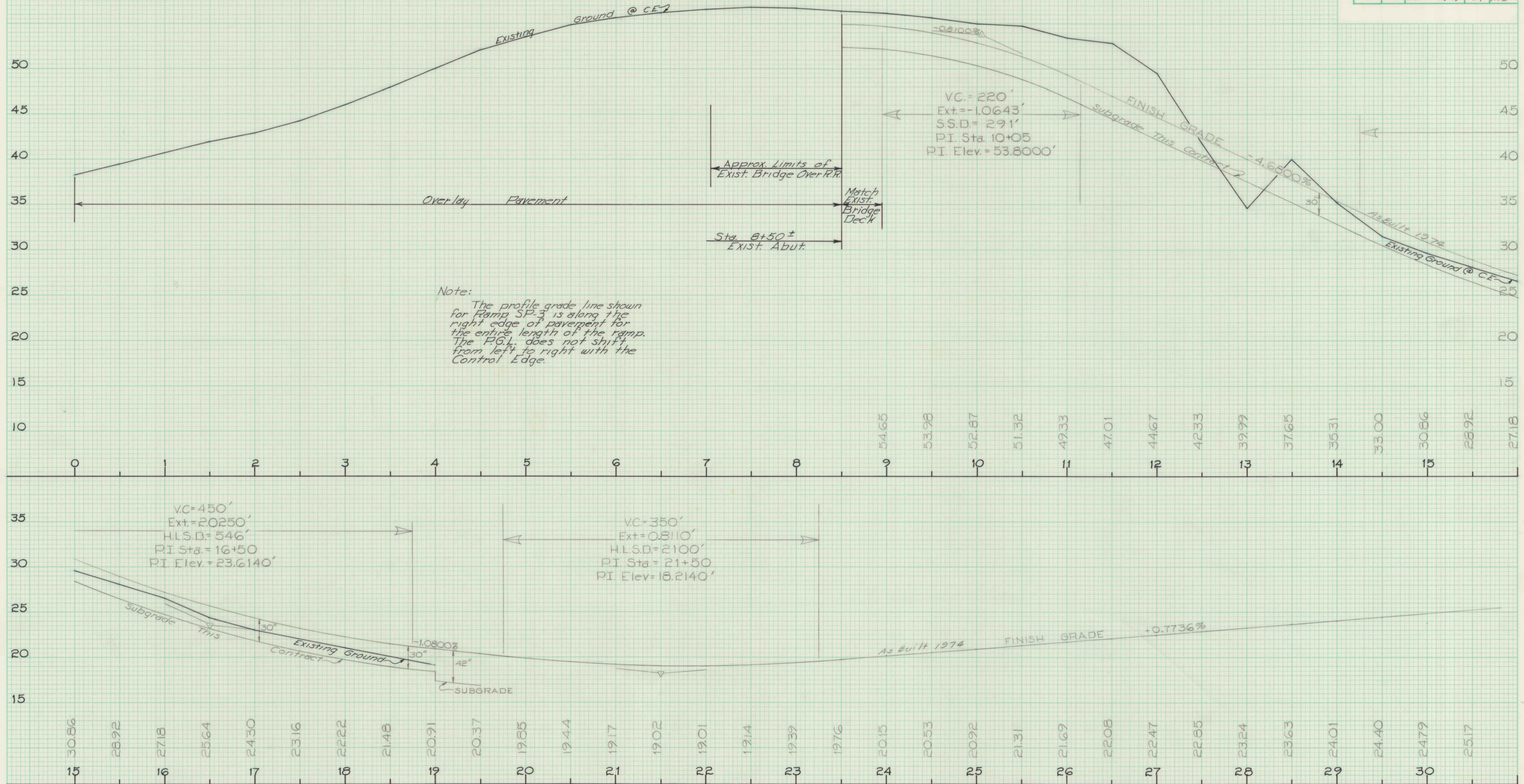
PROFILE
RAMP SP-2
Sta. 0+00 To 31+00

South Portland I-295-3(76)

FINAL SURVEY		BY	DATE
NOTE BOOK		SURVEYED	
		PLOTTED	
		TEMPLATE	
		AREAS	
		AREAS CHECKED	



South Portland I-295-3(76)



Note:
The profile grade line shown for Ramp SP-3 is along the right edge of pavement for the entire length of the ramp. The P.G.L. does not shift from left to right with the Control Edge.

STATE OF MAINE
DEPARTMENT OF TRANSPORTATION

PROFILE
RAMP SP-3
Sta. 0+00 To 30+83.23

As Built 1974

ENR 5-17-76

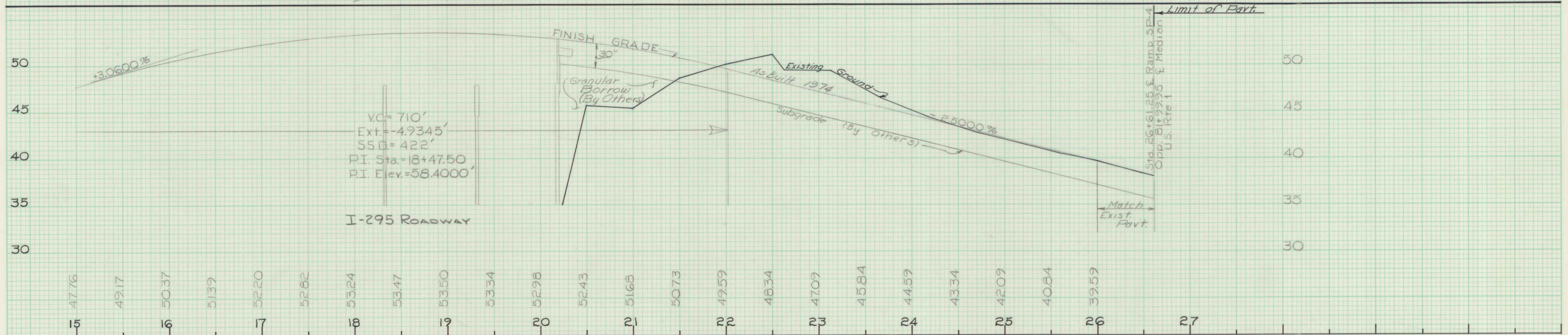
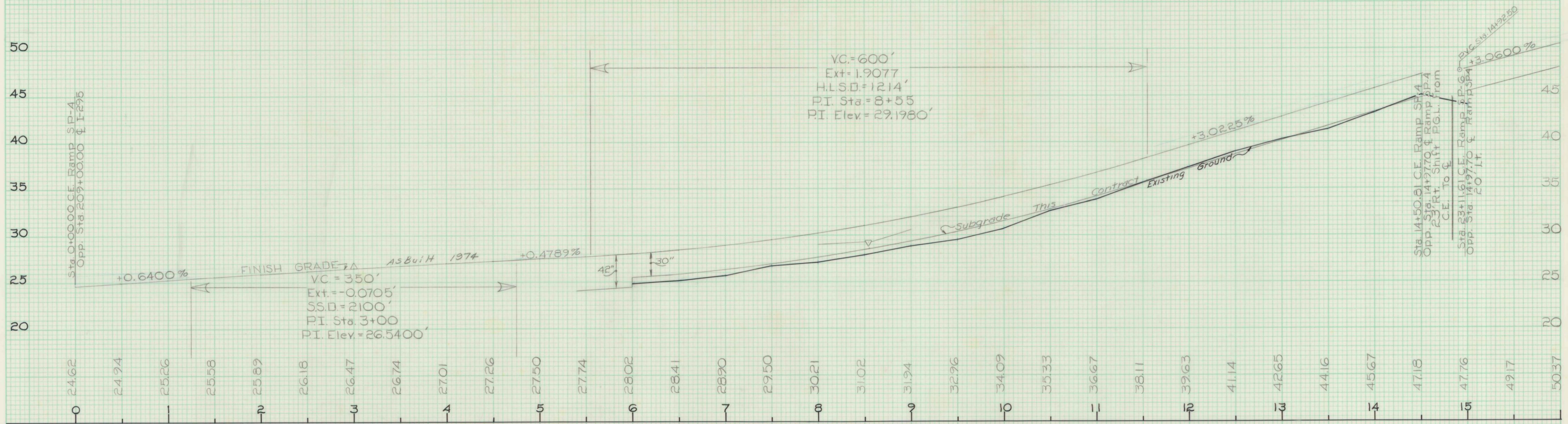
South Portland I-295-3(76)

DATE	BY	FINAL SURVEY	NOTES	AREAS CHECKED

DATE	BY	ORIGINAL SURVEY	NOTES	AREAS CHECKED

FINAL SURVEY	DATE
NO. 1	
NO. 2	
NO. 3	
NO. 4	
NO. 5	
NO. 6	
NO. 7	
NO. 8	
NO. 9	
NO. 10	
NO. 11	
NO. 12	
NO. 13	
NO. 14	
NO. 15	
NO. 16	
NO. 17	
NO. 18	
NO. 19	
NO. 20	
NO. 21	
NO. 22	
NO. 23	
NO. 24	
NO. 25	
NO. 26	
NO. 27	
NO. 28	
NO. 29	
NO. 30	
NO. 31	
NO. 32	
NO. 33	
NO. 34	
NO. 35	
NO. 36	
NO. 37	
NO. 38	
NO. 39	
NO. 40	
NO. 41	
NO. 42	
NO. 43	
NO. 44	
NO. 45	
NO. 46	
NO. 47	
NO. 48	
NO. 49	
NO. 50	
NO. 51	
NO. 52	
NO. 53	
NO. 54	
NO. 55	
NO. 56	
NO. 57	
NO. 58	
NO. 59	
NO. 60	
NO. 61	
NO. 62	
NO. 63	
NO. 64	
NO. 65	
NO. 66	
NO. 67	
NO. 68	
NO. 69	
NO. 70	
NO. 71	
NO. 72	
NO. 73	
NO. 74	
NO. 75	
NO. 76	
NO. 77	
NO. 78	
NO. 79	
NO. 80	
NO. 81	
NO. 82	
NO. 83	
NO. 84	
NO. 85	
NO. 86	
NO. 87	
NO. 88	
NO. 89	
NO. 90	
NO. 91	
NO. 92	
NO. 93	
NO. 94	
NO. 95	
NO. 96	
NO. 97	
NO. 98	
NO. 99	
NO. 100	

ORIGINAL SURVEY	DATE
NO. 1	
NO. 2	
NO. 3	
NO. 4	
NO. 5	
NO. 6	
NO. 7	
NO. 8	
NO. 9	
NO. 10	
NO. 11	
NO. 12	
NO. 13	
NO. 14	
NO. 15	
NO. 16	
NO. 17	
NO. 18	
NO. 19	
NO. 20	
NO. 21	
NO. 22	
NO. 23	
NO. 24	
NO. 25	
NO. 26	
NO. 27	
NO. 28	
NO. 29	
NO. 30	
NO. 31	
NO. 32	
NO. 33	
NO. 34	
NO. 35	
NO. 36	
NO. 37	
NO. 38	
NO. 39	
NO. 40	
NO. 41	
NO. 42	
NO. 43	
NO. 44	
NO. 45	
NO. 46	
NO. 47	
NO. 48	
NO. 49	
NO. 50	
NO. 51	
NO. 52	
NO. 53	
NO. 54	
NO. 55	
NO. 56	
NO. 57	
NO. 58	
NO. 59	
NO. 60	
NO. 61	
NO. 62	
NO. 63	
NO. 64	
NO. 65	
NO. 66	
NO. 67	
NO. 68	
NO. 69	
NO. 70	
NO. 71	
NO. 72	
NO. 73	
NO. 74	
NO. 75	
NO. 76	
NO. 77	
NO. 78	
NO. 79	
NO. 80	
NO. 81	
NO. 82	
NO. 83	
NO. 84	
NO. 85	
NO. 86	
NO. 87	
NO. 88	
NO. 89	
NO. 90	
NO. 91	
NO. 92	
NO. 93	
NO. 94	
NO. 95	
NO. 96	
NO. 97	
NO. 98	
NO. 99	
NO. 100	



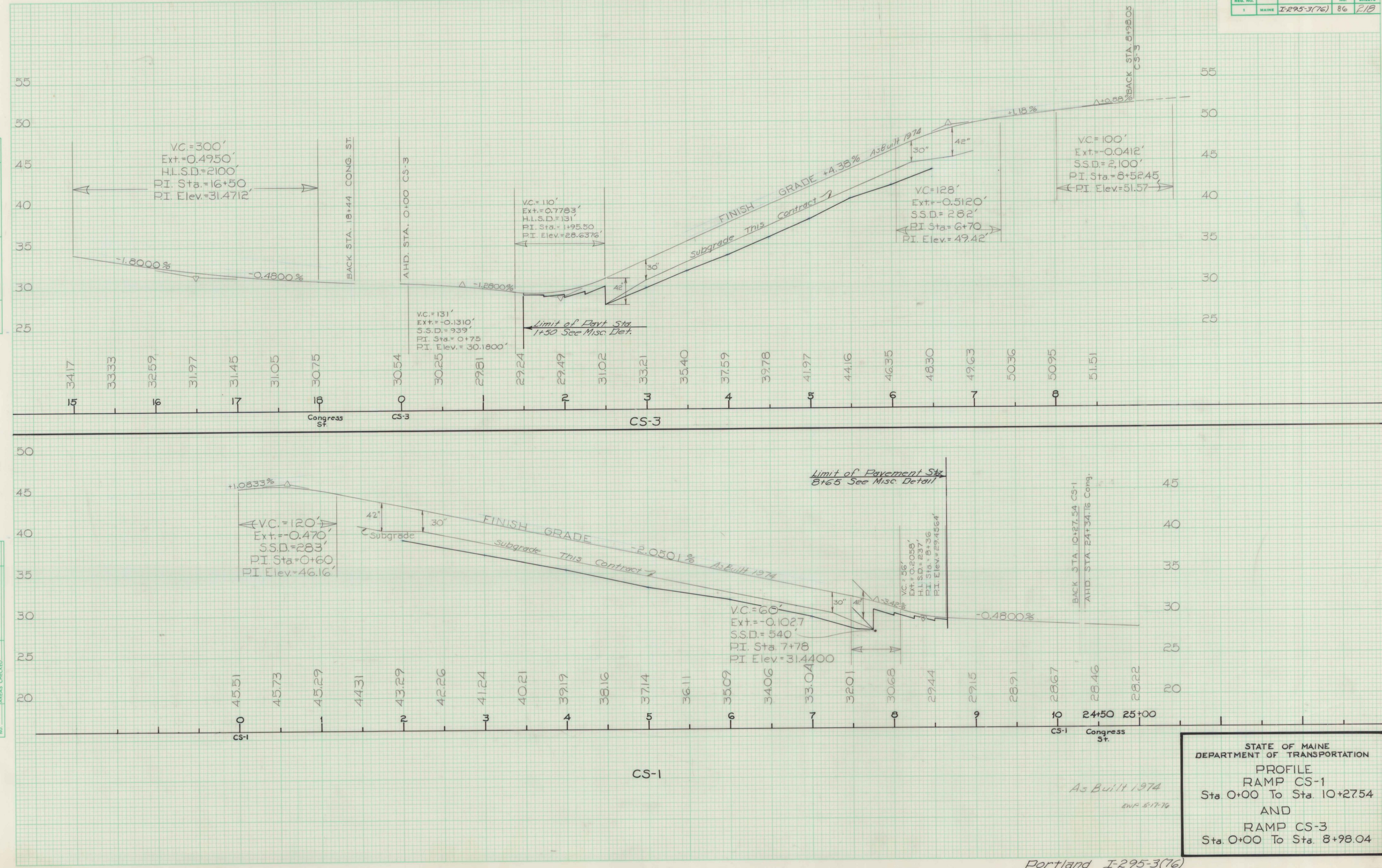
STATE OF MAINE
DEPARTMENT OF TRANSPORTATION

PROFILE
RAMP SP-4
Sta. 0+00 To 26+61.25

As Built 1974
ENR 5-17-76
South Portland I-295-3(76)

DATE	BY
FINAL SURVEY	SURVEYED
NOTE BOOK	PLOTTED
NO.	TEMPLATE
	AREAS CHECKED

DATE	BY
ORIGINAL SURVEY	SURVEYED
NOTE BOOK	PLOTTED
NO.	TEMPLATE
	AREAS CHECKED



STATE OF MAINE
DEPARTMENT OF TRANSPORTATION
PROFILE
RAMP CS-1
Sta. 0+00 To Sta. 10+27.54
AND
RAMP CS-3
Sta. 0+00 To Sta. 8+98.04

As Built 1974
ENR 5-17-76
Portland I-295-3(76)

DATE	BY

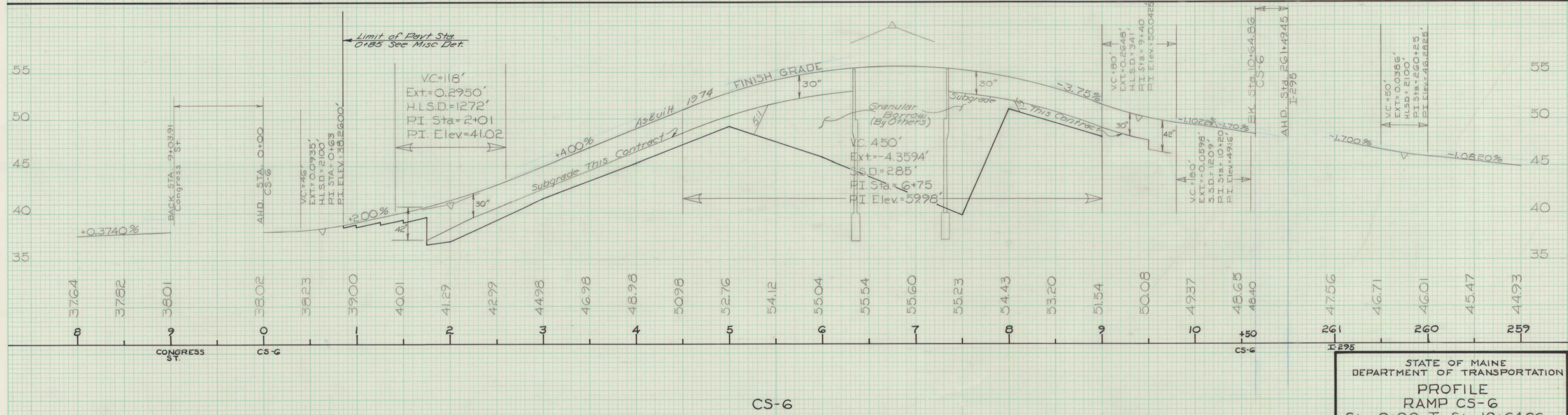
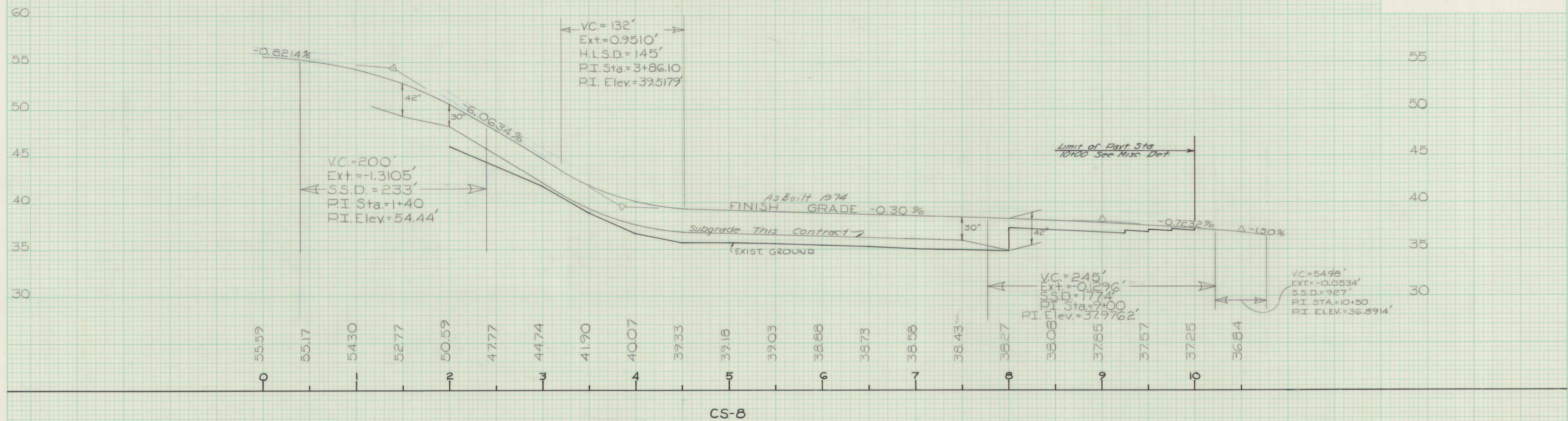
FINAL SURVEY	SURVEYED PLOTTED	DATE

NO.	NOTE BOOK	AREAS CHECKED

DATE	BY

ORIGINAL SURVEY	SURVEYED PLOTTED	DATE

NO.	NOTE BOOK	AREAS CHECKED



STATE OF MAINE
DEPARTMENT OF TRANSPORTATION

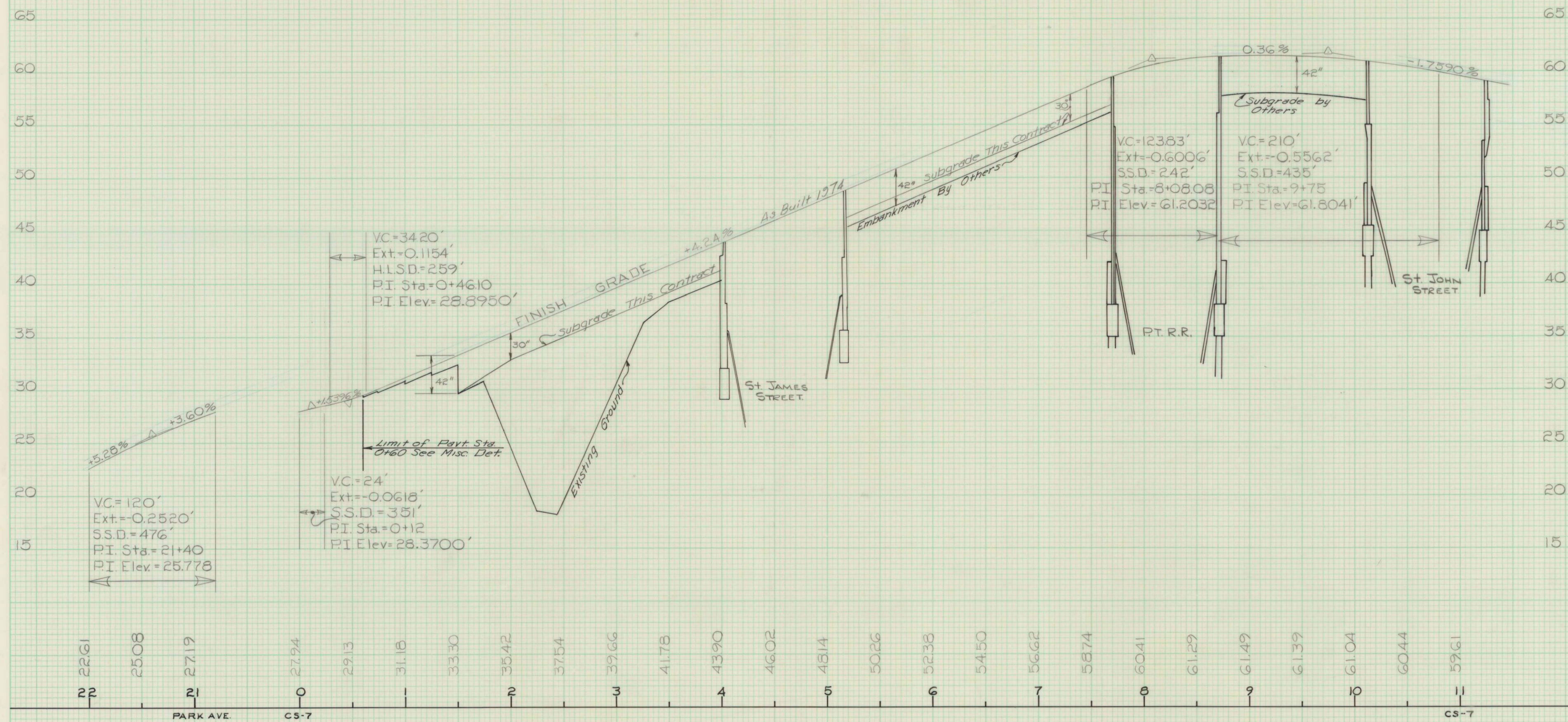
PROFILE
RAMP CS-6
Sta. 0+00 To Sta. 10+64.86
AND
RAMP CS-8
Sta. 0+00 To Sta. 10+79.09

As Built 1974
END 5-17-76

Portland I-295-3(76)

FINAL SURVEY	SURVEYED	BY	DATE
NOTE BOOK	PLOTTED		
NO.	TEMPLATE		
	AREAS		
	AREAS CHECKED		

ORIGINAL SURVEY	SURVEYED	BY	DATE
NOTE BOOK	PLOTTED		
	TEMPLATE		
	AREAS		
	AREAS CHECKED		



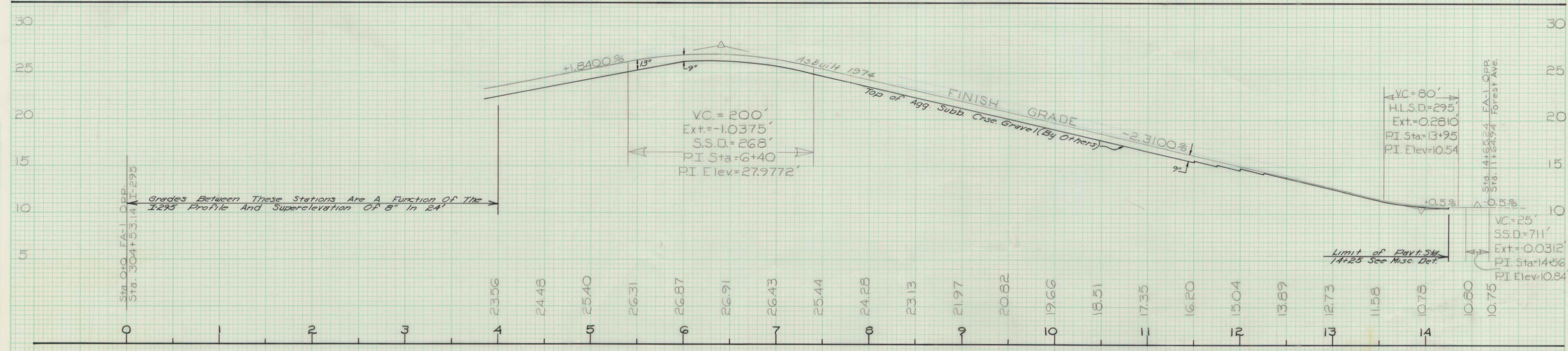
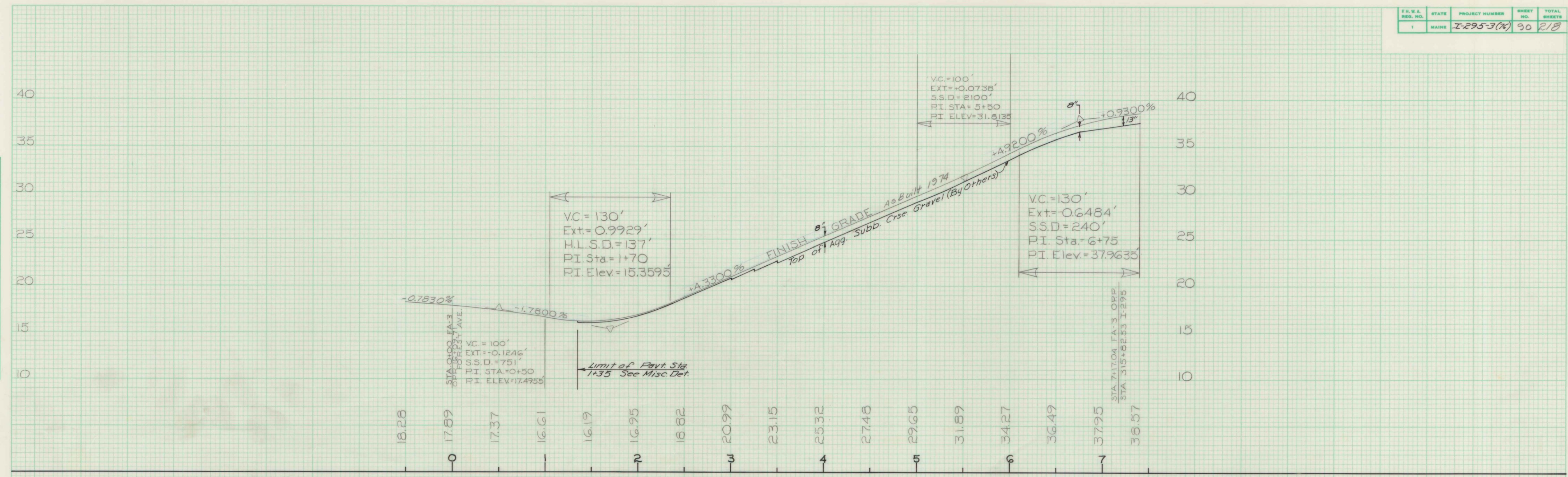
As Built 1974 EWP 5-17-76

STATE OF MAINE
DEPARTMENT OF TRANSPORTATION
PROFILE
RAMP CS-7
Sta. 0+00 To Sta. 11+00

Portland I-295-3(76)

FINAL SURVEY	DATE
SURVEYED	BY
PLOTTED	
TEMPLATE	
NOTE BOOK	
AREAS CHECKED	

ORIGINAL SURVEY	DATE
SURVEYED	BY
PLOTTED	
TEMPLATE	
NOTE BOOK	
AREAS CHECKED	

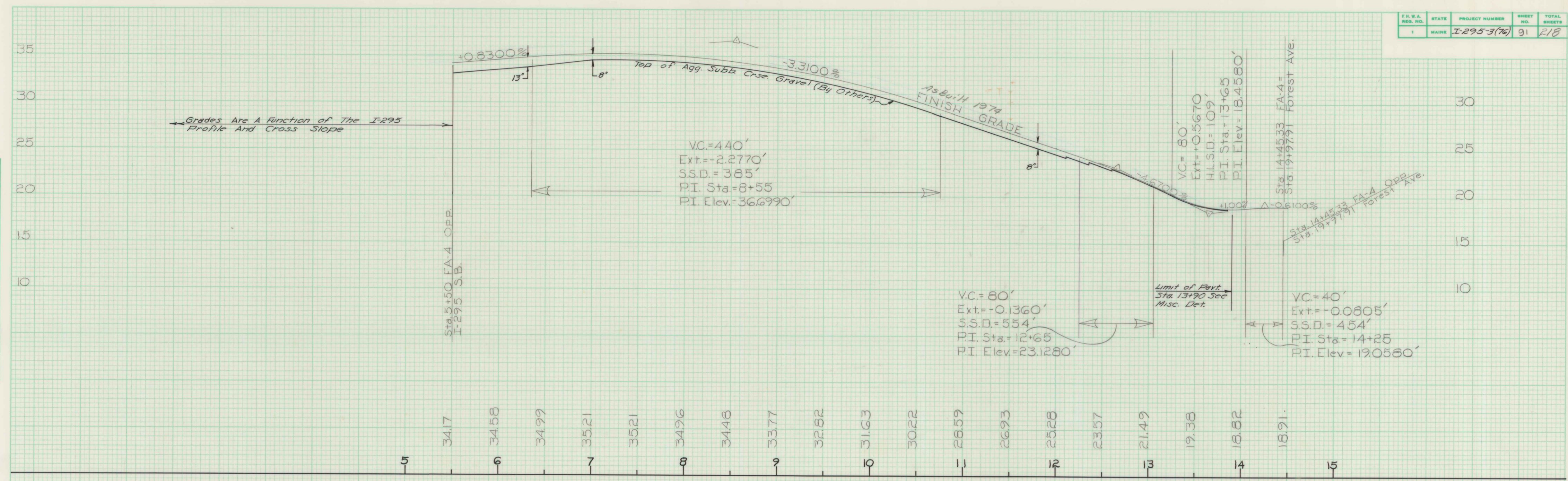


STATE OF MAINE
DEPARTMENT OF TRANSPORTATION

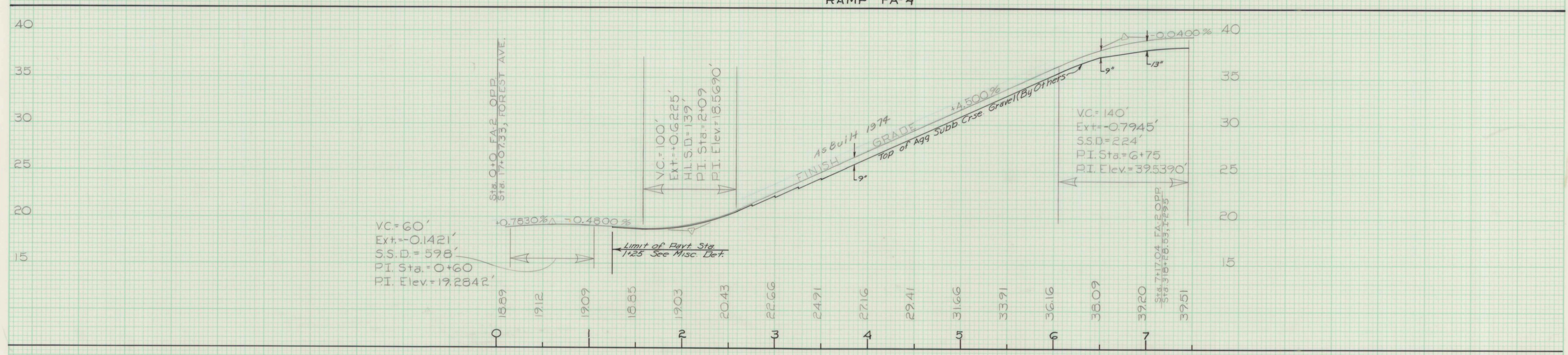
PROFILE
RAMP FA-1
Sta. 0+0 To Sta. 14+75
AND
RAMP FA-3
Sta. 0+50 To Sta. 7+50

As Built 1974
ENR 5-17-76
Portland I-295-3(76)

FINAL SURVEY	BY	DATE
SURVEYED		
PLOTTED		
TEMPLATE		
NOTE BOOK		
AREAS CHECKED		



ORIGINAL SURVEY	BY	DATE
SURVEYED		
PLOTTED		
TEMPLATE		
NOTE BOOK		
AREAS CHECKED		

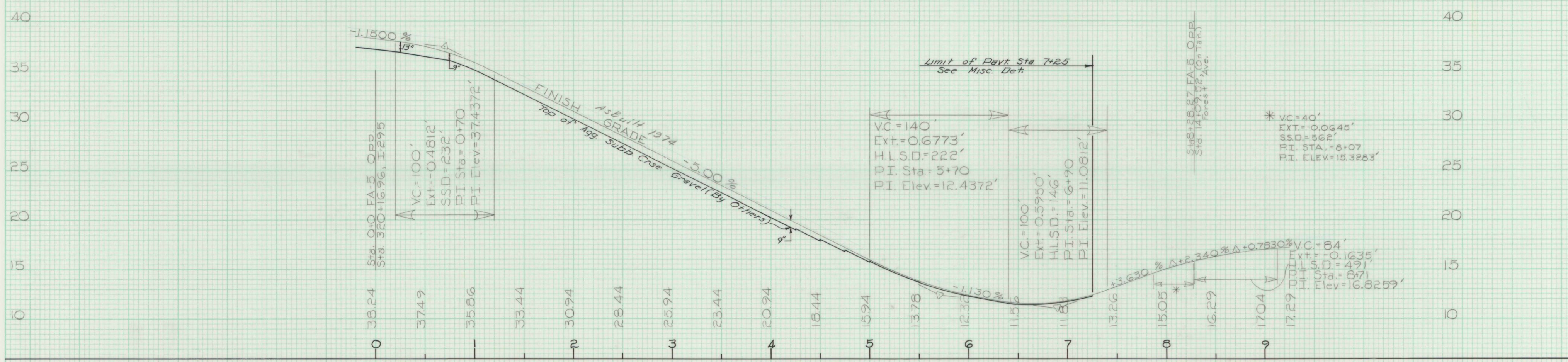
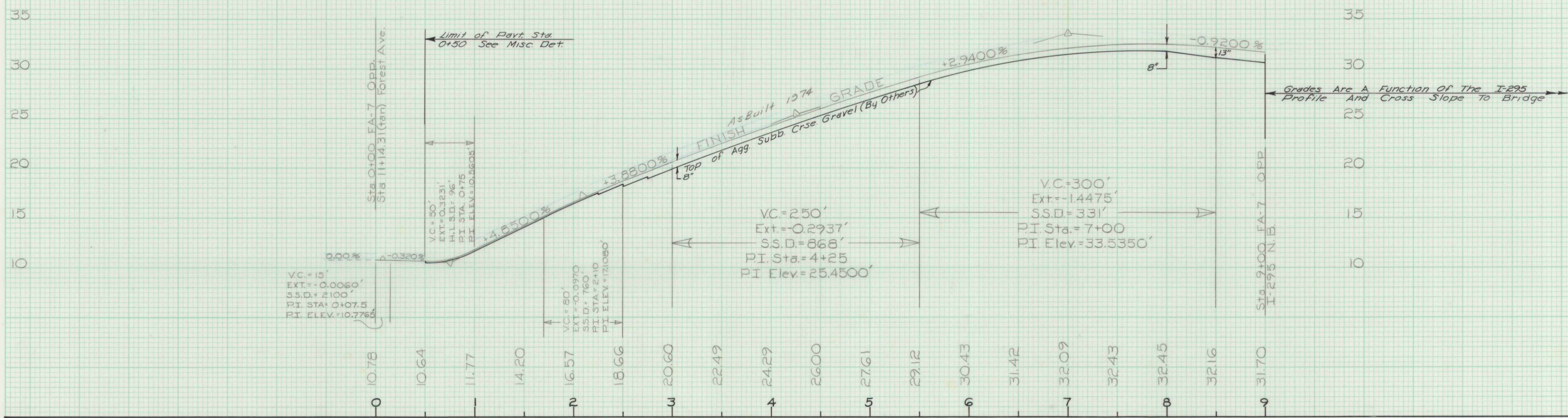


STATE OF MAINE
DEPARTMENT OF TRANSPORTATION

PROFILE
RAMP FA-2
Sta 0+10 To Sta. 7+45
AND
RAMP FA-4
Sta. 5+50 To Sta. 14+50

FINAL SURVEY	DATE	BY
SURVEYED		
PLOTTED		
TEMPLATE		
NOTE BOOK		
AREAS CHECKED		
NO.		

ORIGINAL SURVEY	DATE	BY
SURVEYED		
PLOTTED		
TEMPLATE		
NOTE BOOK		
AREAS CHECKED		
NO.		



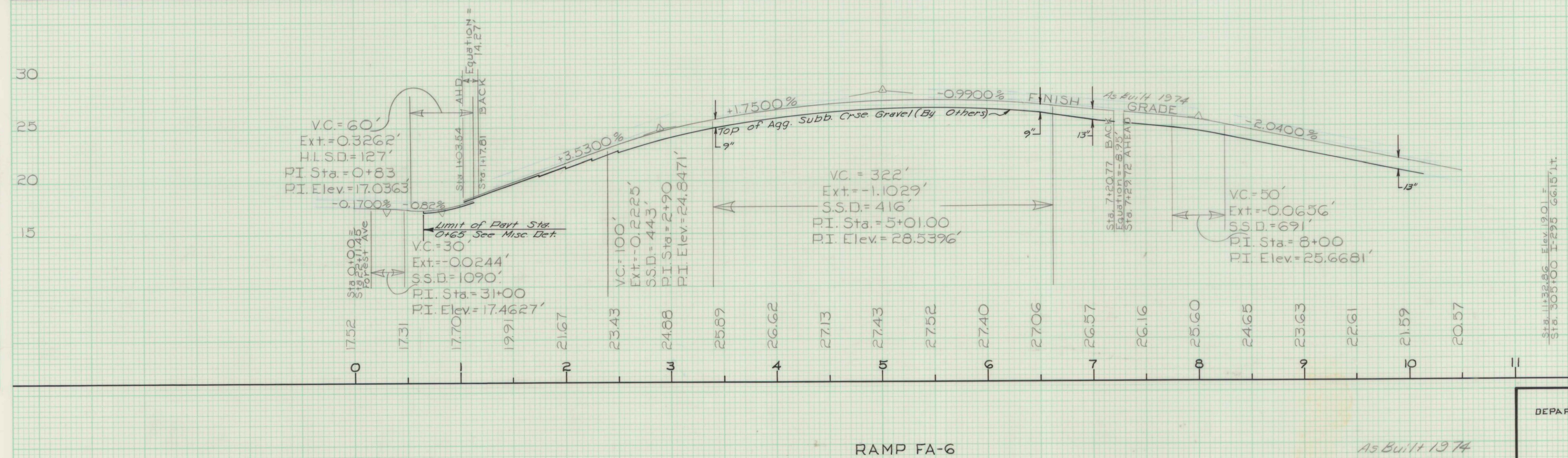
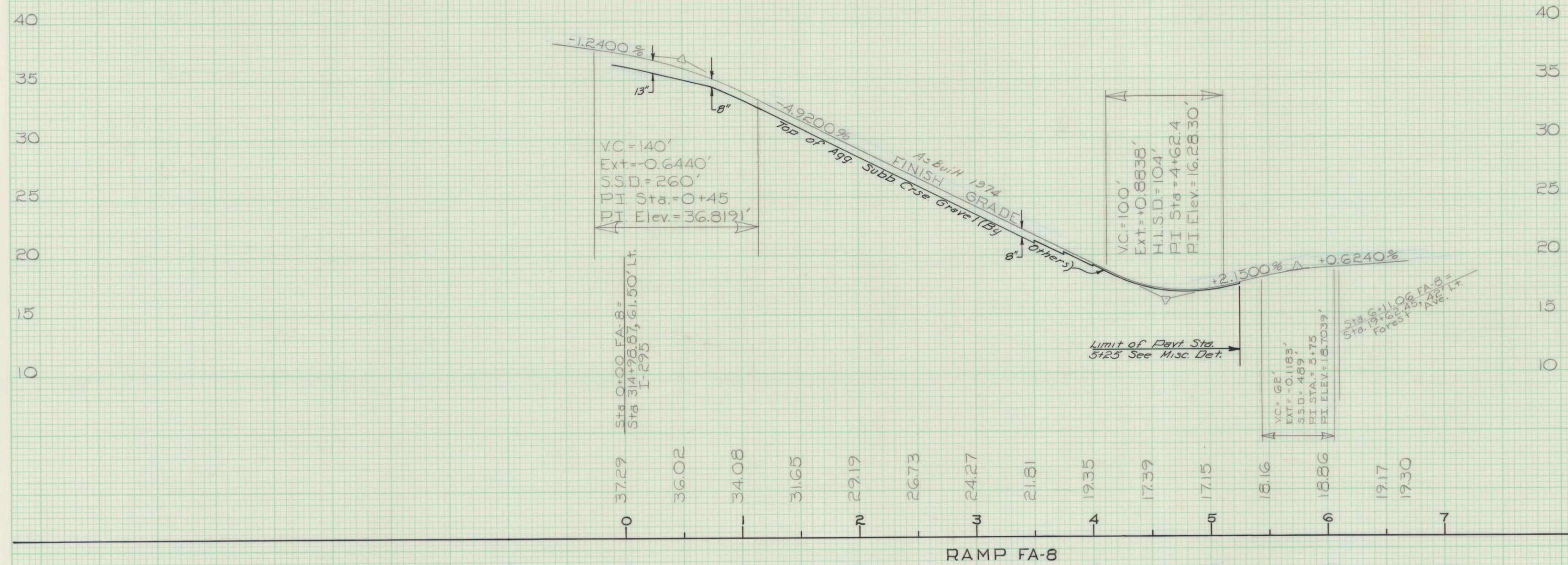
STATE OF MAINE
DEPARTMENT OF TRANSPORTATION

PROFILE
RAMP FA-5
Sta. 0+20 To Sta. 9+30
AND
RAMP FA-7
Sta. 0+00 To Sta. 9+00

As Built 1974
ENR 5-17-76
Portland I-295-3(76)

FINAL SURVEY	DATE	BY
SURVEYED		
PLOTTED		
NOTED		
AREAS CHECKED		

ORIGINAL SURVEY	DATE	BY
SURVEYED		
PLOTTED		
NOTED		
AREAS CHECKED		

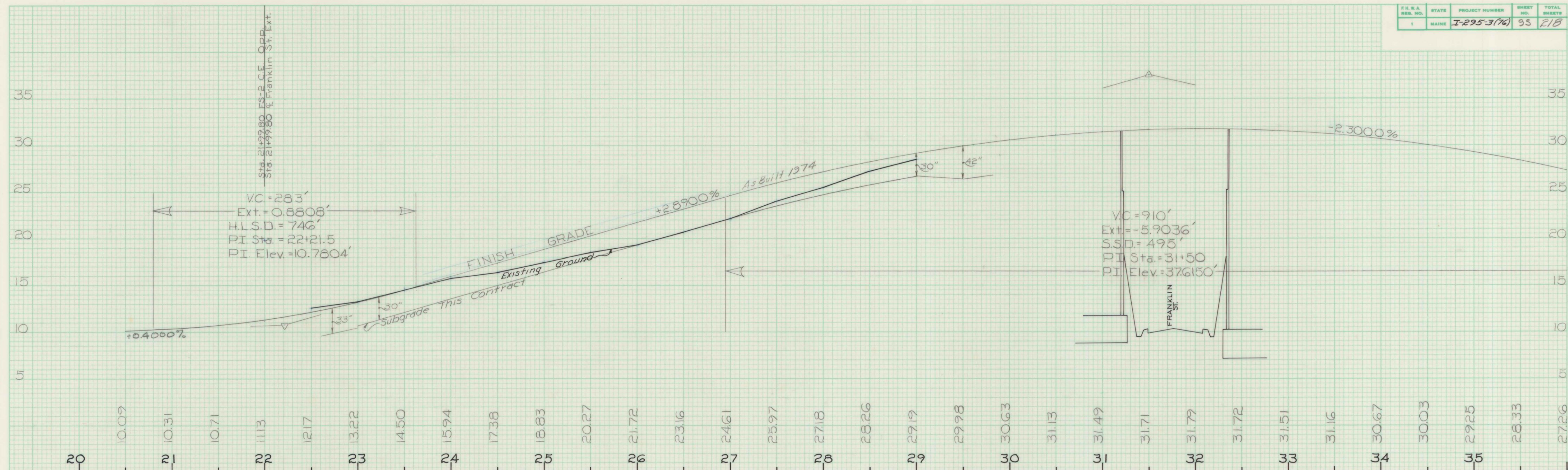


STATE OF MAINE
DEPARTMENT OF TRANSPORTATION

PROFILE
RAMP FA-6
Sta. 0+0 To Sta. 11+32.86
AND
RAMP FA-8
Sta. 0+40 To Sta. 6+70

As Built 1974
ENR 5-17-76
Portland I-295-3(76)

FINAL SURVEY	SURVEYED PLOTTED TEMPLATE	BY	DATE
NOTE BOOK	AREAS CHECKED		
NO.			



ORIGINAL SURVEY		BY	DATE
	SURVEYED		
	PLOTTED	D.P.B.	Nov. 72
	TEMPLATE		
	AREAS		
	CHECKED		

STATE OF MAINE
DEPARTMENT OF TRANSPORTATION

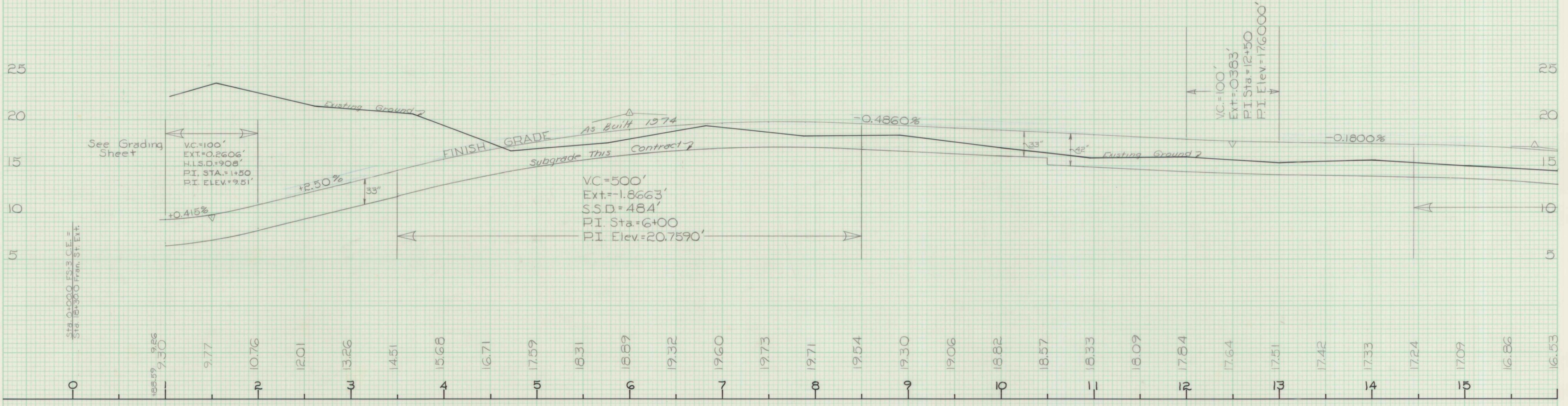
PROFILE
RAMP FS-2
Sta. 20+80 To Sta. 23+63

As Built 1974

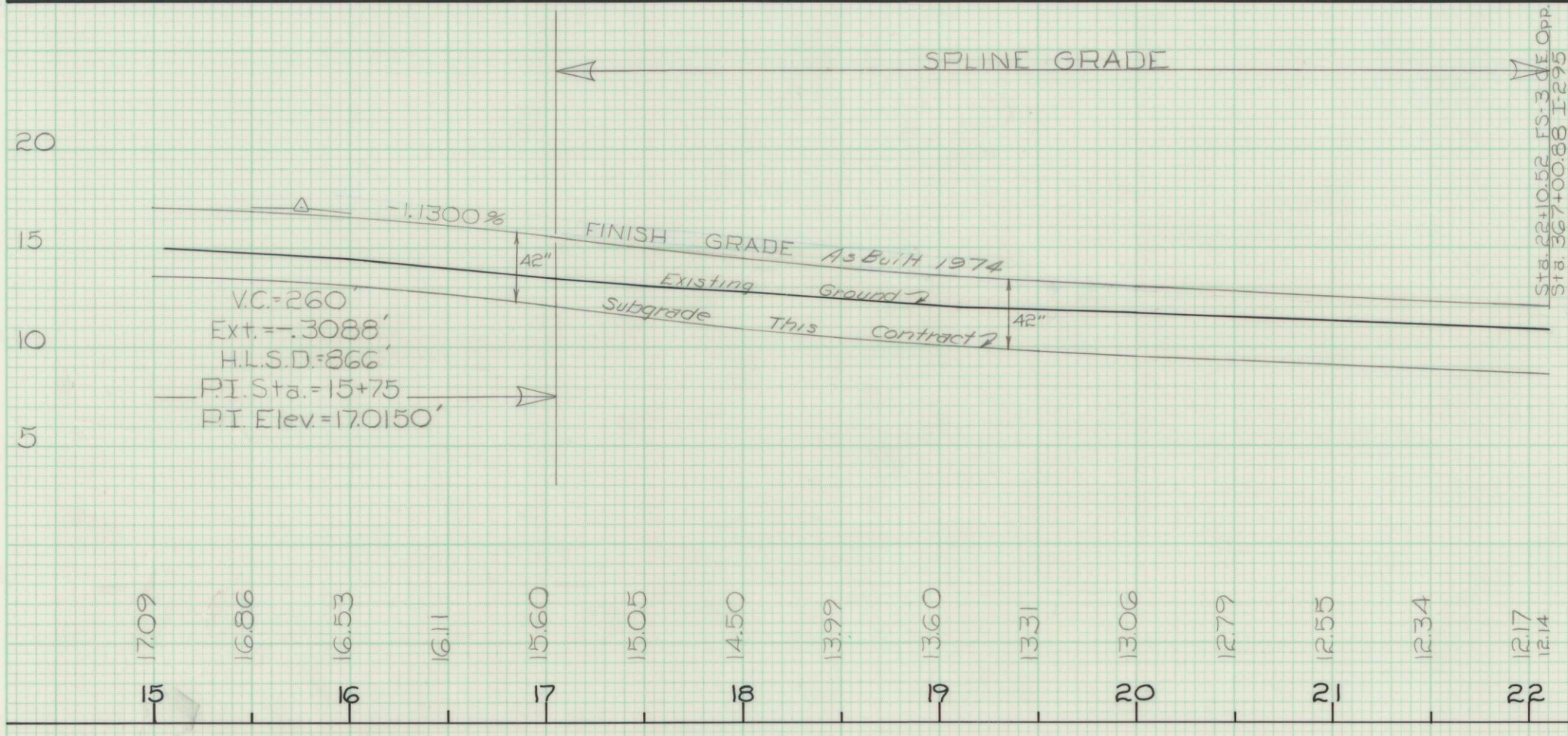
EWD 5-17-76

Portland I-295-3(76)

FINAL SURVEY	SURVEYED	BY	DATE
NO.	PLOTTED		
	TEMP.		
	AREAS CHECKED		



ORIGINAL SURVEY	SURVEYED	BY	DATE
NO.	PLOTTED		
	TEMP.		
	AREAS CHECKED		



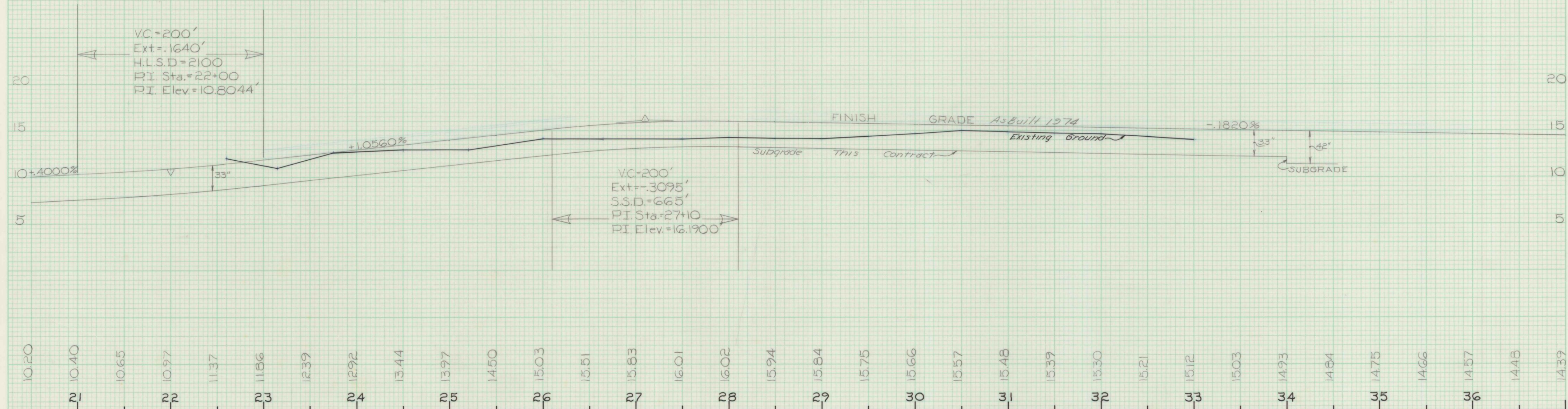
As Built 1974
ERP 5-17-76

Portland I-295-3(76)

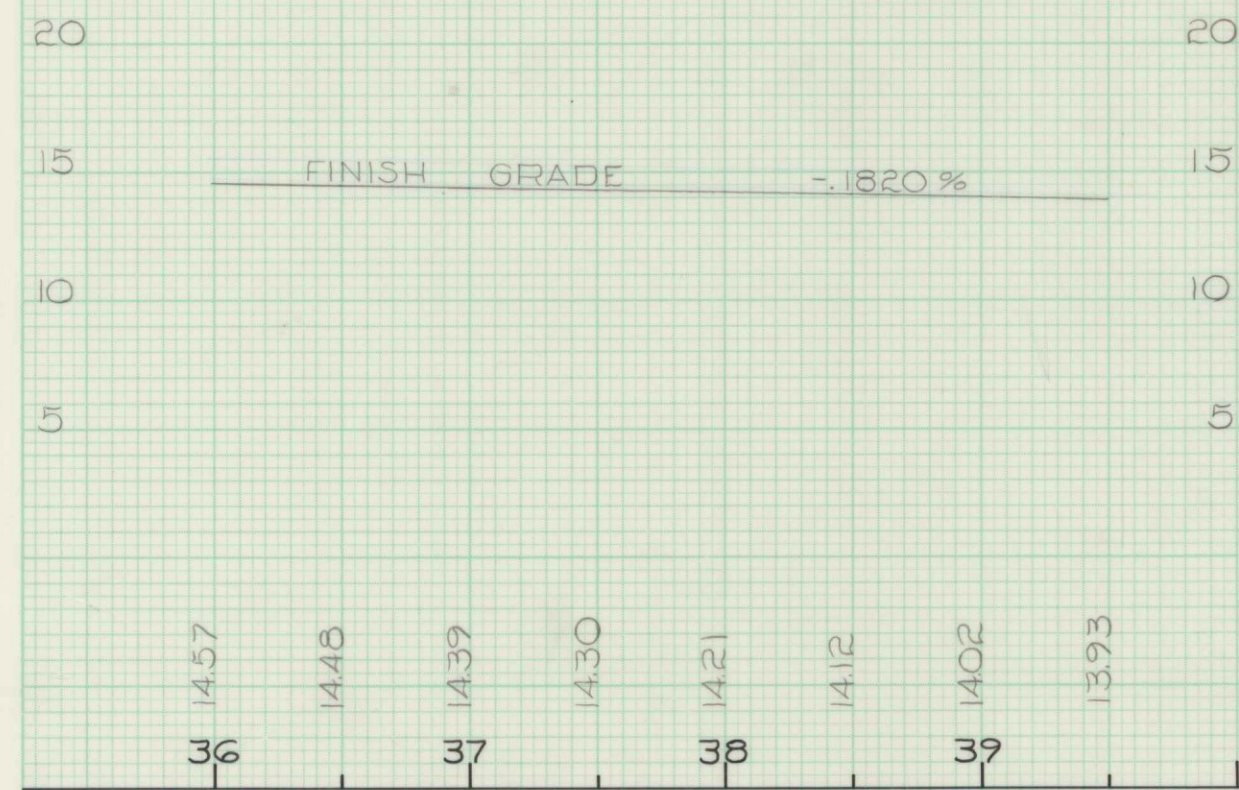
STATE OF MAINE
DEPARTMENT OF TRANSPORTATION

PROFILE
RAMP FS-3
Sta. 0+00 To Sta. 22+10.52

FINAL SURVEY	NO.	NOTE BOOK	SURVEYED PLOTTED TEMPLATE AREAS CHECKED	BY	DATE



ORIGINAL SURVEY	NO.	NOTE BOOK	SURVEYED PLOTTED TEMPLATE AREAS CHECKED	BY	DATE



As Built 1974
ENR 5-17-76

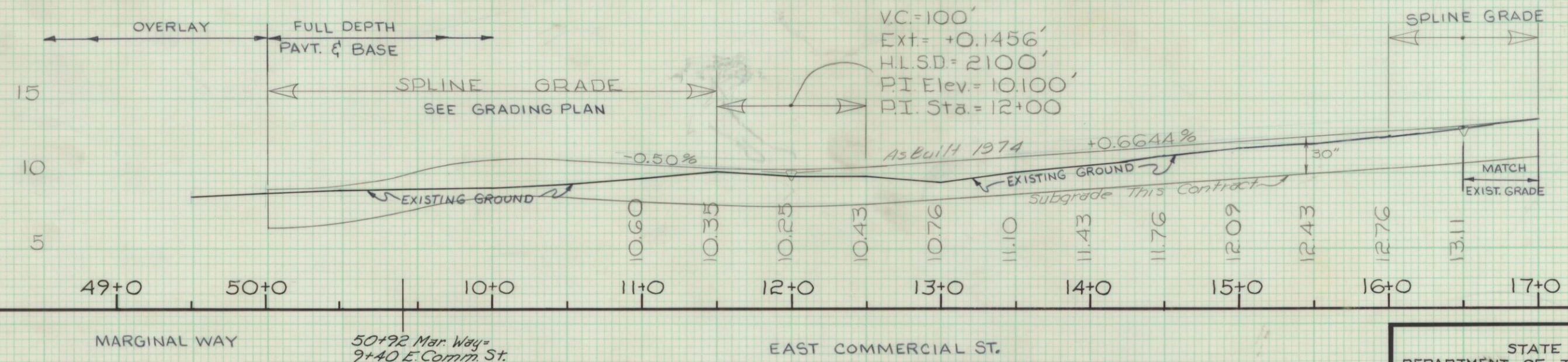
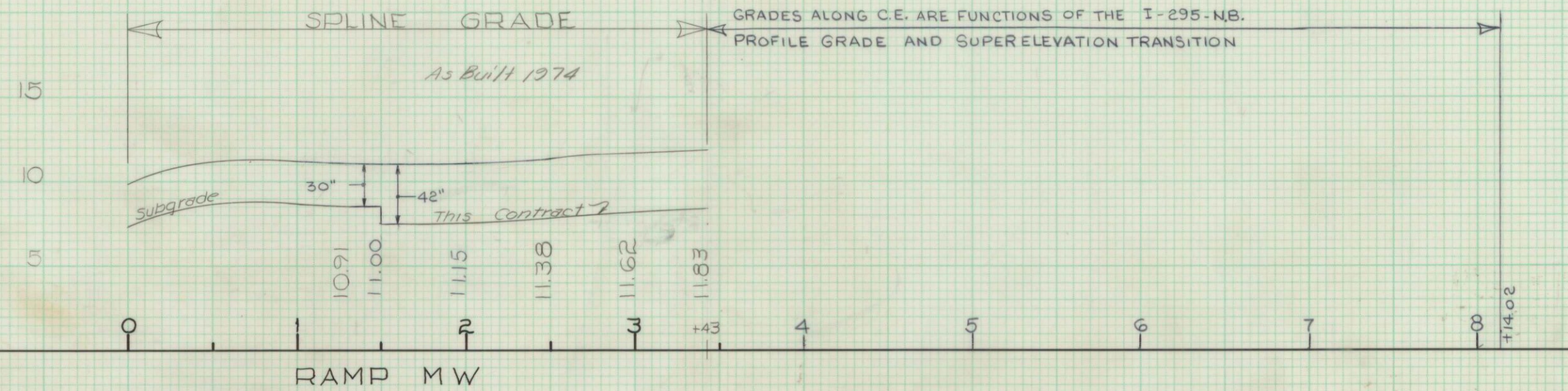
Portland I-295-3(76)

STATE OF MAINE
DEPARTMENT OF TRANSPORTATION

PROFILE
RAMP FS-4
Sta. 21+00 To Sta 39+55.66

FINAL SURVEY	BY	DATE
SURVEYED		
PLOTTED		
NOTED		
AREAS CHECKED		
NO.		

ORIGINAL SURVEY	BY	DATE
SURVEYED		
PLOTTED		
NOTED		
AREAS CHECKED		
NO.		



STATE OF MAINE
DEPARTMENT OF TRANSPORTATION

PROFILE
EAST COMMERCIAL ST.
Sta. 9+40 To 17+0
RAMP-MW
Sta. 0+00 To 3+40

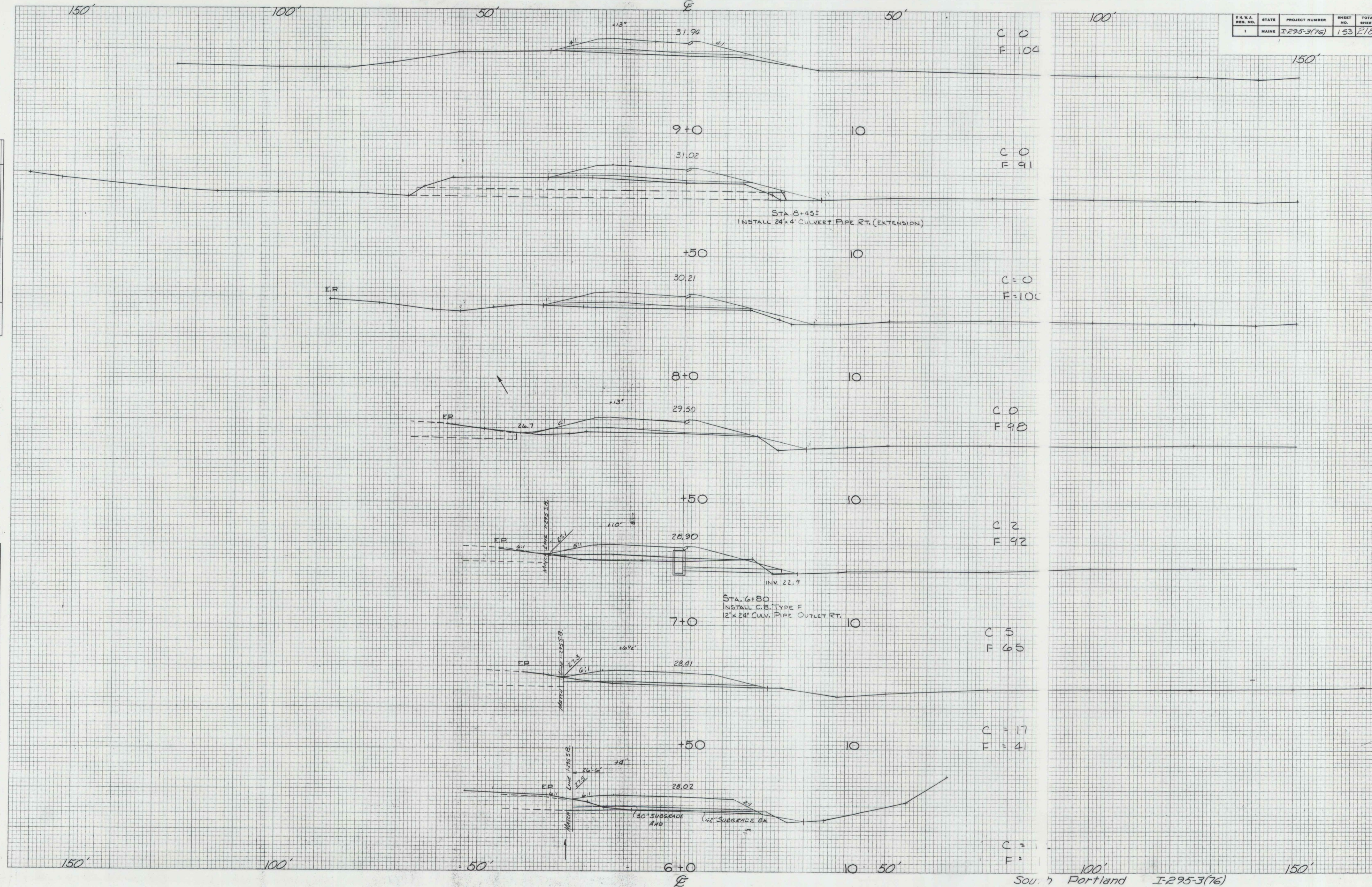
As Built 1974
ENR 5-17-76

Portland I-295-3(76)

FINAL SURVEY	SURVEYED	BY	DATE
NO.	PLOTTED		
	TEMP.		
	AREAS		
	CHECKED		

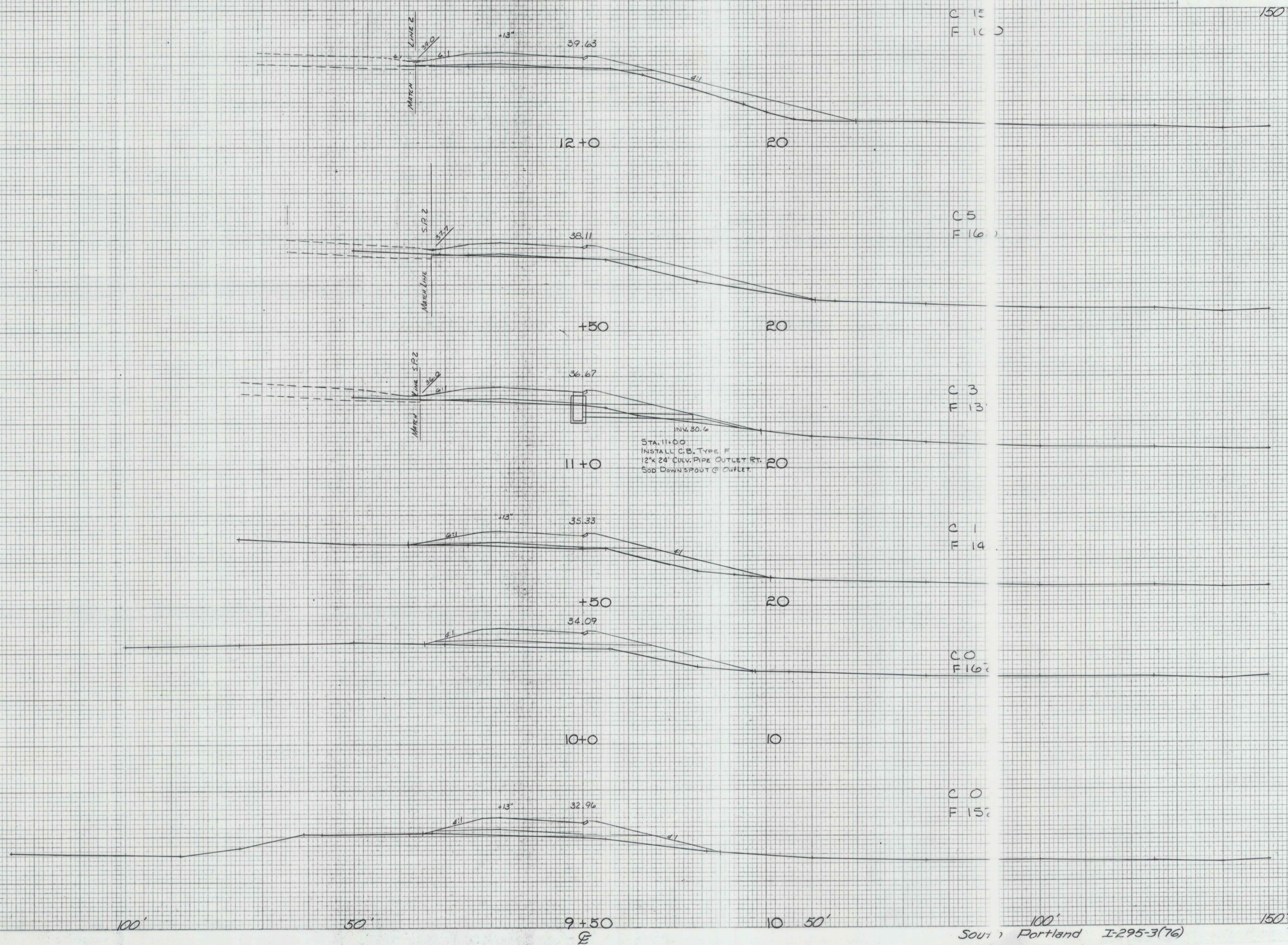
ORIGINAL SURVEY	SURVEYED	BY	DATE
NO.	PLOTTED		
	TEMP.		
	AREAS		
	CHECKED		

F.H.W.A. REG. NO.	STATE	PROJECT NUMBER	SHEET NO.	TOTAL SHEETS
1	MAINE	I-295-3(76)	153	218



SP-4 STA. 6+0 TO 9+0

F.H.W.A. REG. NO.	STATE	PROJECT NUMBER	SHEET NO.	TOTAL SHEETS
1	MAINE	I-295-3(76)	154	218



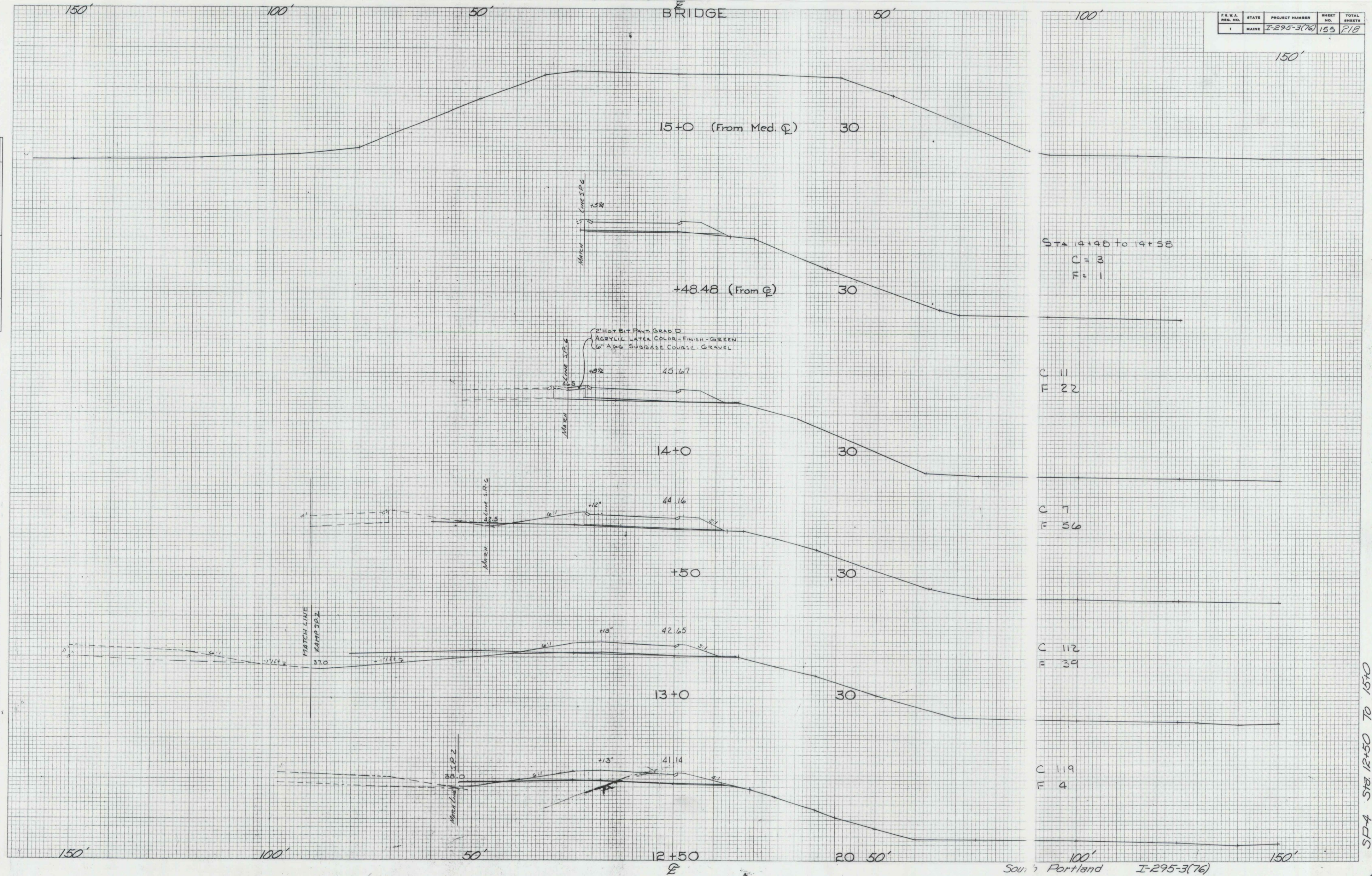
SP-4 Sta. 9+50 To 12+0

FINAL SURVEY	SURVEYED _____		BY _____	DATE _____
	PLOTTED _____			
NOTE BOOK	TEMPLATE _____			
	AREAS _____			
NO. _____	AREAS CHECKED _____			

ORIGINAL SURVEY	SURVEYED	BY	DATE
	PLOTTED	<i>W. H. C. 13-4</i>	<i>1/73</i>
NOTE BOOK	TEMPERATURE	<i>W. H. C. 11 Feb 73</i>	<i>2/73</i>
NO. <i>985622</i>	AREAS		
	CHECKED		

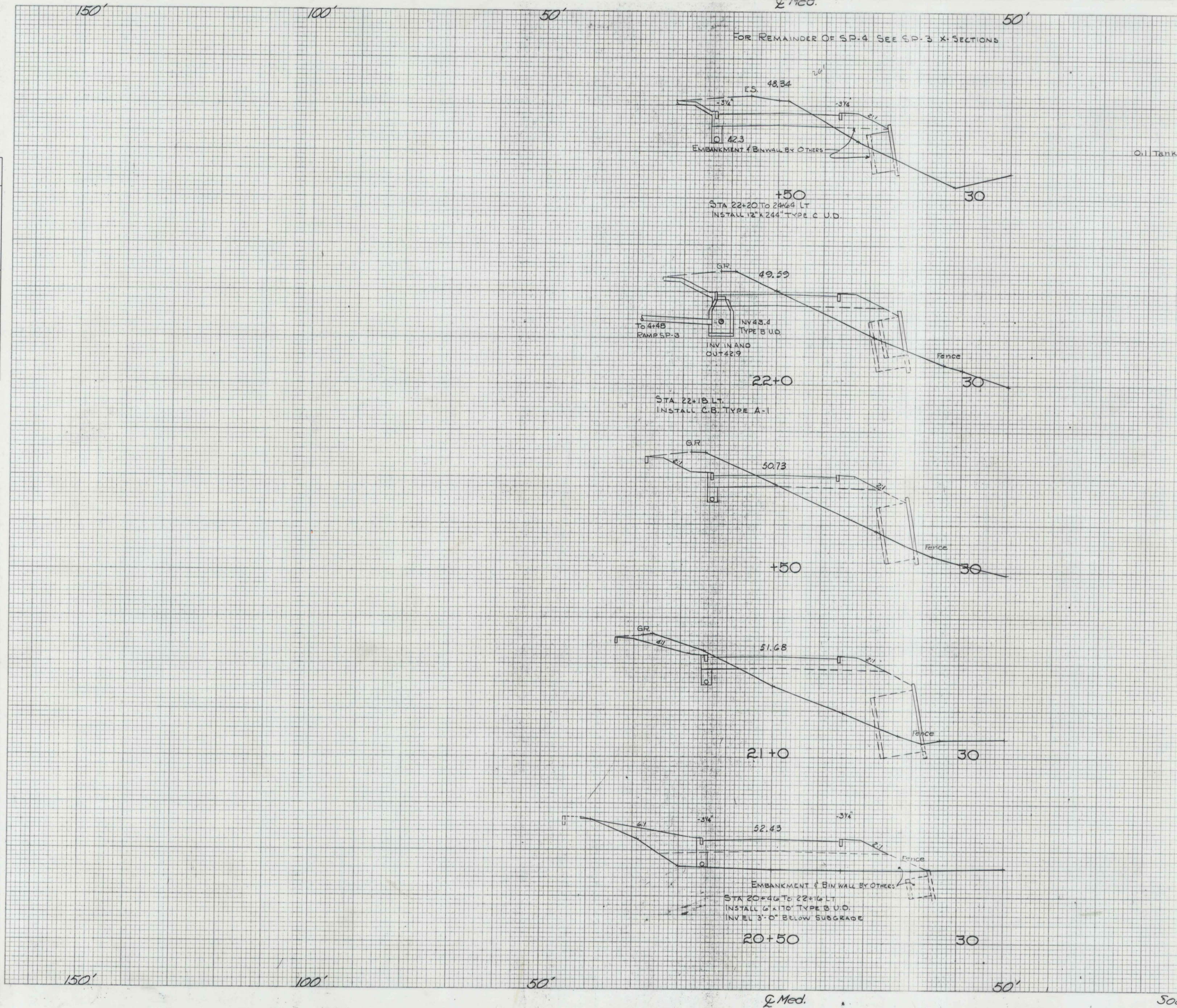
FINAL SURVEY		SURVEYED _____	* BY _____	DATE _____
NOTE BOOK		PLOTTED _____		
NO. _____		TEMPLATE _____		
		AREAS _____		
		AREAS CHECKED _____		

ORIGINAL SURVEY	SURVEYED	BY	DATE
	PLOTTED	<i>Walter C. Clegg</i>	<i>1/13</i>
	TEMPLATE	<i>Clegg & Murphy</i>	<i>2/17</i>
NOTE BOOK	AREAS		
NO. <i>895622</i>	AREAS CHECKED		



FINAL SURVEY	BY	DATE
SURVEYED		
PLOTTED		
NOTE BOOK		
NO.		
AREAS CHECKED		

ORIGINAL SURVEY	BY	DATE
SURVEYED		
PLOTTED		
NOTE BOOK		
NO.		
AREAS CHECKED		



F.H.W.A. RES. NO.	STATE	PROJECT NUMBER	SHEET NO.	TOTAL SHEETS
1	MAINE	I-295-3(76)	156	218

C 70
F 0

C: 244
F: 0

C 200
F 0

C: 126
F: 0

C 42
F 55

C 0
F 111